

Woman Sculptor, Painter, & Legally Blind at NoHo



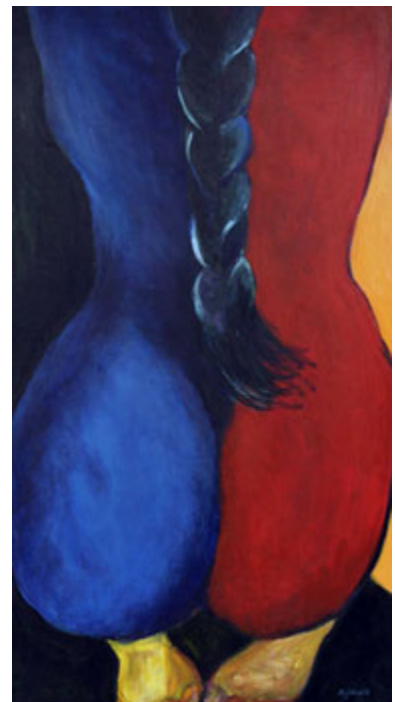
Alisa Gabrielle. " Goddess of the Twilight ". At NoHo Gallery LA.

North Hollywood, CA— Alisa Gabrielle, a sculptor & painter who is legally blind, is the featured artist in NoHo Gallery LA's exhibit "WOMAN Encore" - a collection of women artists and woman-inspired art celebrating women. By popular demand, the exhibit will extend to April 15.

According to NoHo Gallery LA's featured artist Alisa Gabrielle, "Art for me is a process of inner vision and not so much outer vision. It is an expression of the heart and other senses. Most of my paintings and sculpture come from within, and are not based on a model, not limited to defined realistic forms." While her vision limited what she could see or draw, it probably moved her to go beyond the known to create a style of

beauty that reflects women as they really are, and not how our culture wants them to be.

Alisa was legally blind with a disease called Keratoconus, where the cornea is shaped into a cone and sight is distorted and blurred. "Coke-bottle" glasses, contacts and holistic treatments did not help but that didn't stop her art. While she was carving a piece, a chip flew into her right eye, rupturing her cornea causing a milky



Alisa Gabrielle. " Well Heeled. " At NoHo Gallery LA.

blur. The only option was a corneal transplant. But there were dangers: her body could reject the implant or scar tissue might leave her sight worse. The women/goddesses in her colorful canvases are ripe, sensual bold feminine forms. She produces female images that challenge the limitations of this culture's thinking and celebrate what it means to be a woman, beautiful in all shapes and sizes.

With painting, Alisa depended upon color which she could see, even if she could not see the lines very well. Bright color and large voluminous shapes were what appealed to her and is most likely due to the fact that her vision was blurry or limited. She painted larger paintings because she could see those, and larger forms because she could make those out more clearly, which is how she expresses beauty.

Alisa's voluptuous, abstract figurative forms in marble, alabaster, clay and bronze reflect themes of what it means to be a woman - vulnerable and powerful, vital and fertile. Each stone has a dignity, elegance and eternal quality. Her pieces elicit a desire to want to move your hands along the full feminine forms.

She was able to use her hands with clay and found it a sensually satisfying medium in which to tell a lot with her hands rather than her eyes, so she made shapes that were appealing to the touch as well as vision. Therefore, the figures were more abstracted and voluminous, rather than perfectly realistic in detail as when following a live model. Alisa thinks that is why she usually works from her head and her heart rather than a model, because she may not be able to see the model that clearly but can feel and enjoy the shapes she wants to make rather than follow someone else's limiting body type.

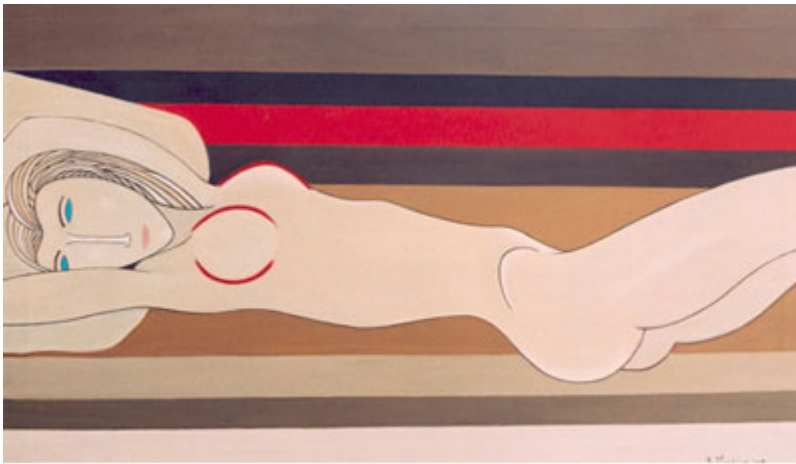
As for her "psychic sketches" she does create a lot of details in those, but she stands very close to the paper and looks for the lines already suggested in the rubbing process, and even so, the figures and faces are still somewhat large and recognizable. She became less concerned with the perfection of the shapes and beings in these Rorschach-like drawings. They were more dreamlike so they did not have to be as clean or clear of line, since she wanted lines to be part of multiple images that often intermingle or blur, as do our thoughts and emotions.

Alisa spent many years as a teacher and psychotherapist, immersed in the processes that touch and move the human spirit. She transformed

those experiences into art. She studied art history and spent time in Pietrasanta, Italy to be where the finest sculptors such as Michelangelo had carved, and where the most beautiful Carrera marble originates. She continues to carve both in Italy and Southern California.

NoHo Gallery LA is pleased to present the following artists:

Alisa Gabrielle	Anita Van Tellengen	Anji Craun	Charisse Abellana
Elizabeth DeVries	Felicite Imam	Linda Kish	Rony Armas
Sophia Louisa	Vera Akotuah	Daniel C. DeBevoise	Francesco Modigo



Francesco Modigo, "Remembering Modigliani". At NoHo Gallery LA.

NoHo Gallery LA was created to give all artists of all mediums a platform in which to promote their work. The Gallery's goal is to see art in every home and artists successfully immersed in their art. NoHo Gallery

LA, a division of NoHo Communications Group, Inc., is housed in the historic Lankershim Arts Center, built c. 1939 as a DWP building, renovated by the City of Los Angeles and is now a designated historic landmark. The Center is also home to the award-winning Road Theatre Company making it a true center for the arts. The NoHo Arts District is home to more than 20 theatres, diverse art galleries, public art, professional dance studios, music recording venues, annual festivals, international dining options and a myriad of clothing and specialty shops. NoHo is "Where the Arts Are Made."

Visit [NoHo Gallery LA](#)